



**NORTH FALLS**

*Offshore Wind Farm*

# **Groundwater Risk Assessment and Monitoring Plan - Private Water Supplies and Licenced Abstractions (Part 2 of 4)**

Document Reference: 9.66  
Volume: 9  
Date: May 2025  
Revision: 0



**NORTH FALLS**

*Offshore Wind Farm*

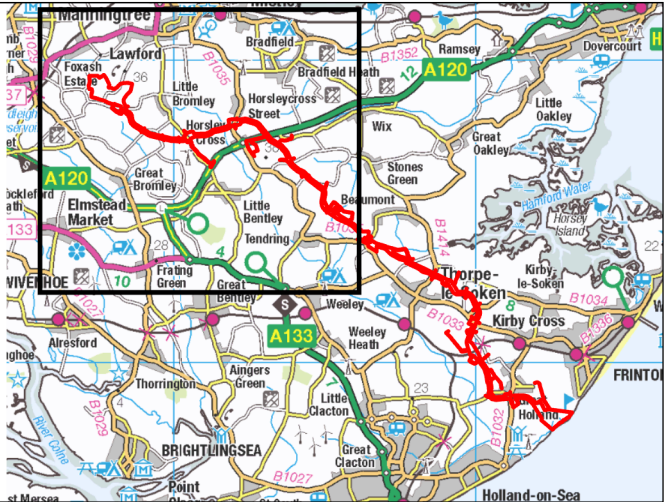
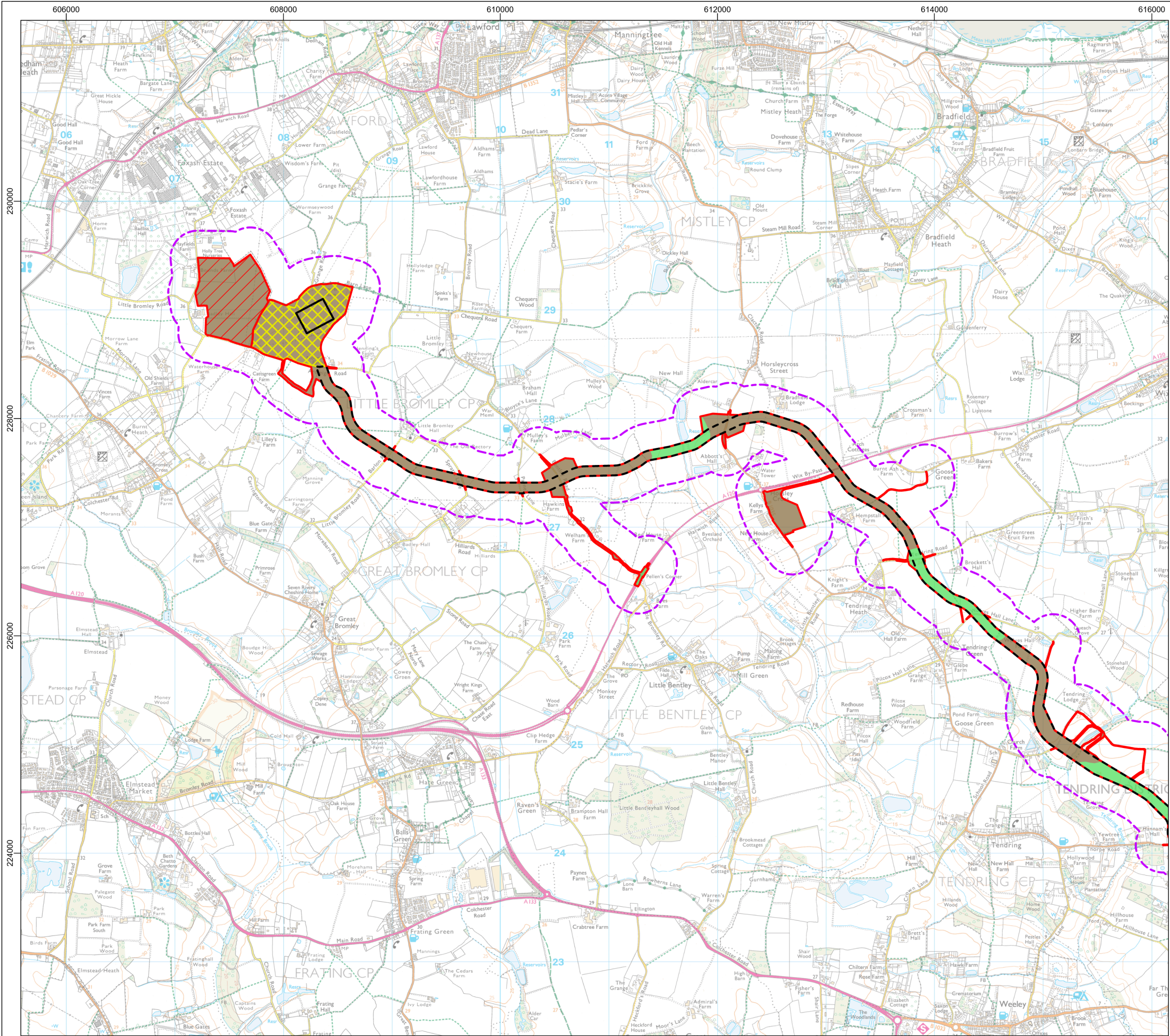
**Project Reference: EN010119**

<b>Project</b>	North Falls Offshore Wind Farm
<b>Document Title</b>	Groundwater Risk Assessment and Monitoring Plan - Private Water Supplies and Licenced Abstractions (Part 2 of 4)
<b>Document Reference</b>	9.66
<b>Supplier</b>	Royal HaskoningDHV
<b>Supplier Document ID</b>	PB9244-RHD-ZZ-ON-RP-ON-0384

This document and any information therein are confidential property of North Falls Offshore Wind Farm Limited and without infringement neither the whole nor any extract may be disclosed, loaned, copied or used for manufacturing, provision of services or other purposes whatsoever without prior written consent of North Falls Offshore Wind Farm Limited, and no liability is accepted for loss or damage from any cause whatsoever from the use of the document. North Falls Offshore Wind Farm Limited retains the right to alter the document at any time unless a written statement to the contrary has been appended.

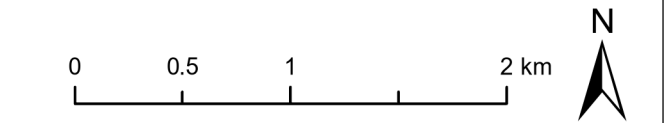
<b>Revision</b>	<b>Date</b>	<b>Status/Reason for Issue</b>	<b>Originator</b>	<b>Checked</b>	<b>Approved</b>
0	May 2025	Deadline 5	RHDHV	NFOW	NFOW





**Legend**

- Onshore Project Area
- Onshore Substation
- East Anglia Connection Node (EACN)
- Onshore Cable Route
- Substation Works Area
- Onshore Project Area Buffer
- 250m
- Soil Type
- Slightly Acid Loamy and Clayey Soils with Impeded Drainage
- Slowly Permeable Seasonally Wet Slightly Acid but Base-Rich Loamy and Clayey Soils



Data Source: © Cranfield, 2024. © HaskoningDHV UK Ltd. 2025.  
Contains Ordnance Survey data © Crown copyright and database rights 2025.

Drawing Title

## Soilscapes

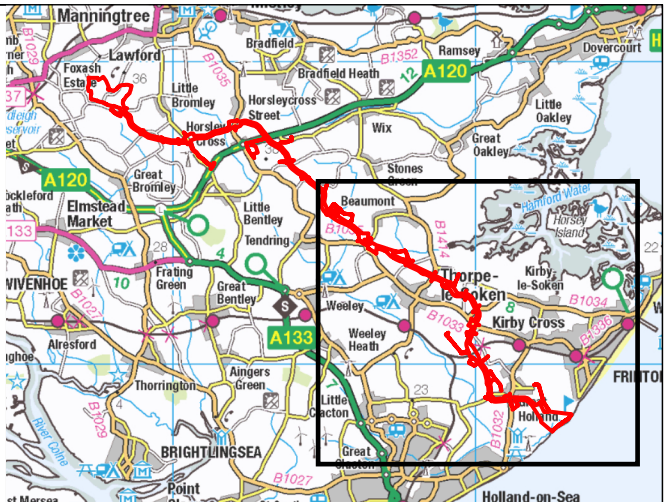
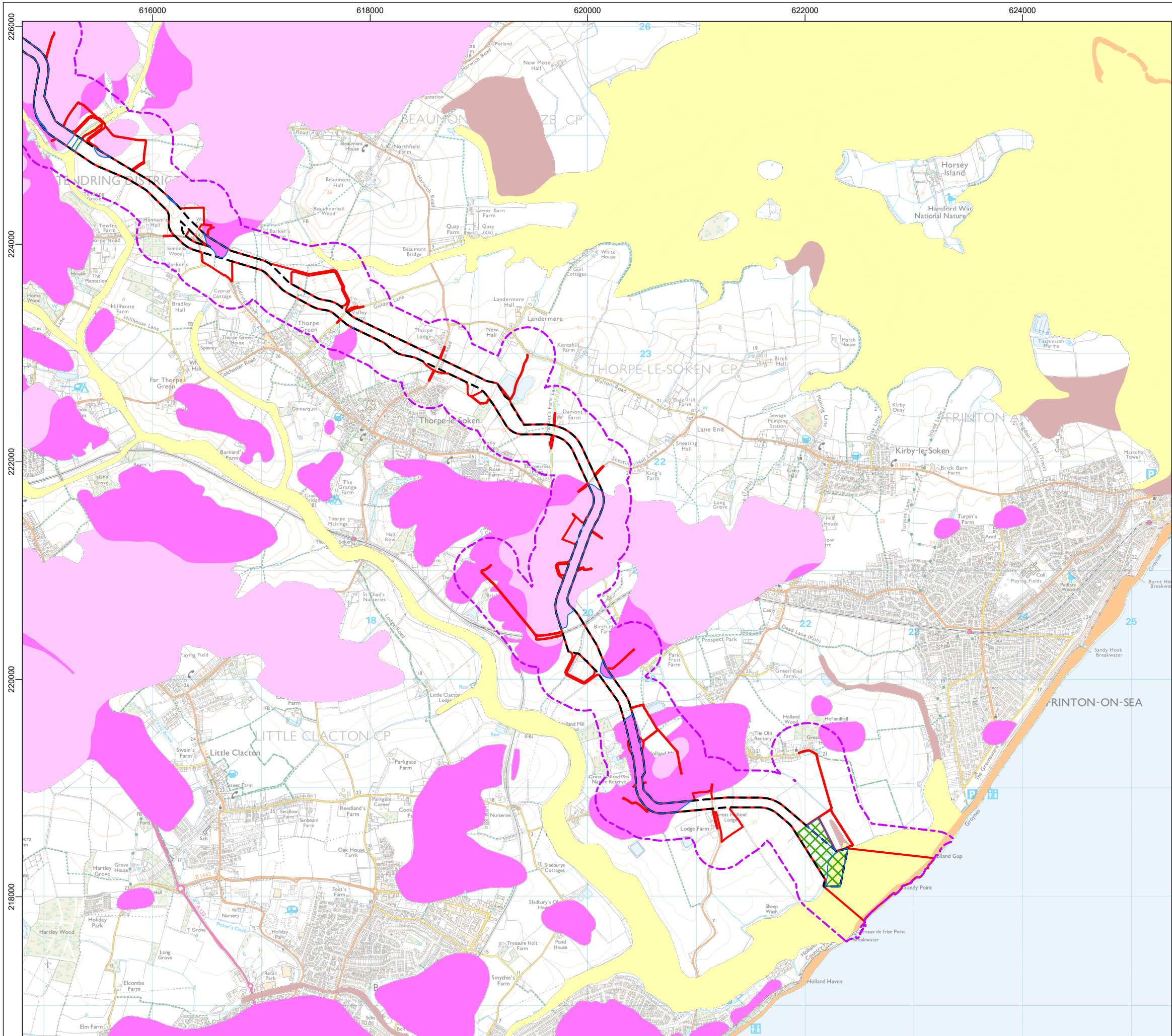
Rev	Date	Remarks	Drwn	Chkd
01	07/05/2025	First issue	FC	AW

Drawing Number	Figure Number
PB9244-RHD-ZZ-ON-DR-GS-0670	2b

Scale	Plot Size	Datum	Projection
1:35,000	A3	OSGB36	BNG







**Legend**

- Onshore Project Area
- Onshore Cable Route
- Landfall Compound
- Onshore Project Area Buffer**
- 250m
- Superficial Geology**
- Alluvium - Clay and Silt
- Cover Sands - Clay, Silt and Sand
- Head - Diamicton
- Head - Silt
- Kesgrave Catchment Subgroup - Sand and Gravel
- Storm Beach Deposits - Sand and Gravel



Data Source: © BGS, 2025. © HaskoningDHV UK Ltd. 2025.  
Contains Ordnance Survey data © Crown copyright and database rights 2025.  
Drawing Title

## Superficial Geology

Rev	Date	Remarks	Drwn	Chkd
01	11/04/2025	First issue	FC	AW

Drawing Number	Figure Number
<b>PB9244-RHD-ZZ-ON-DR-GS-0663</b>	<b>3a</b>

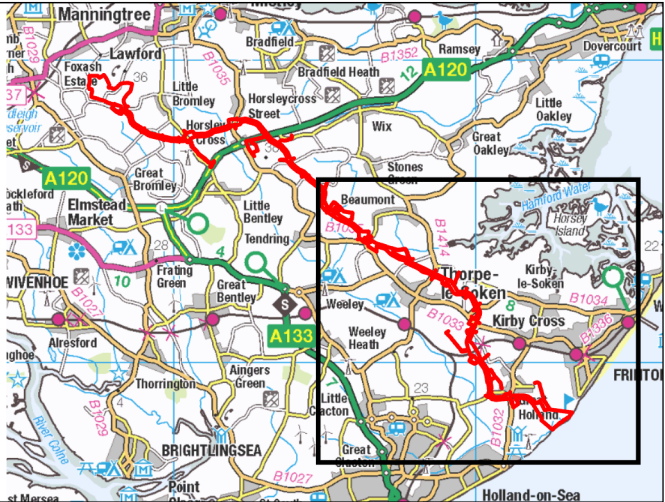
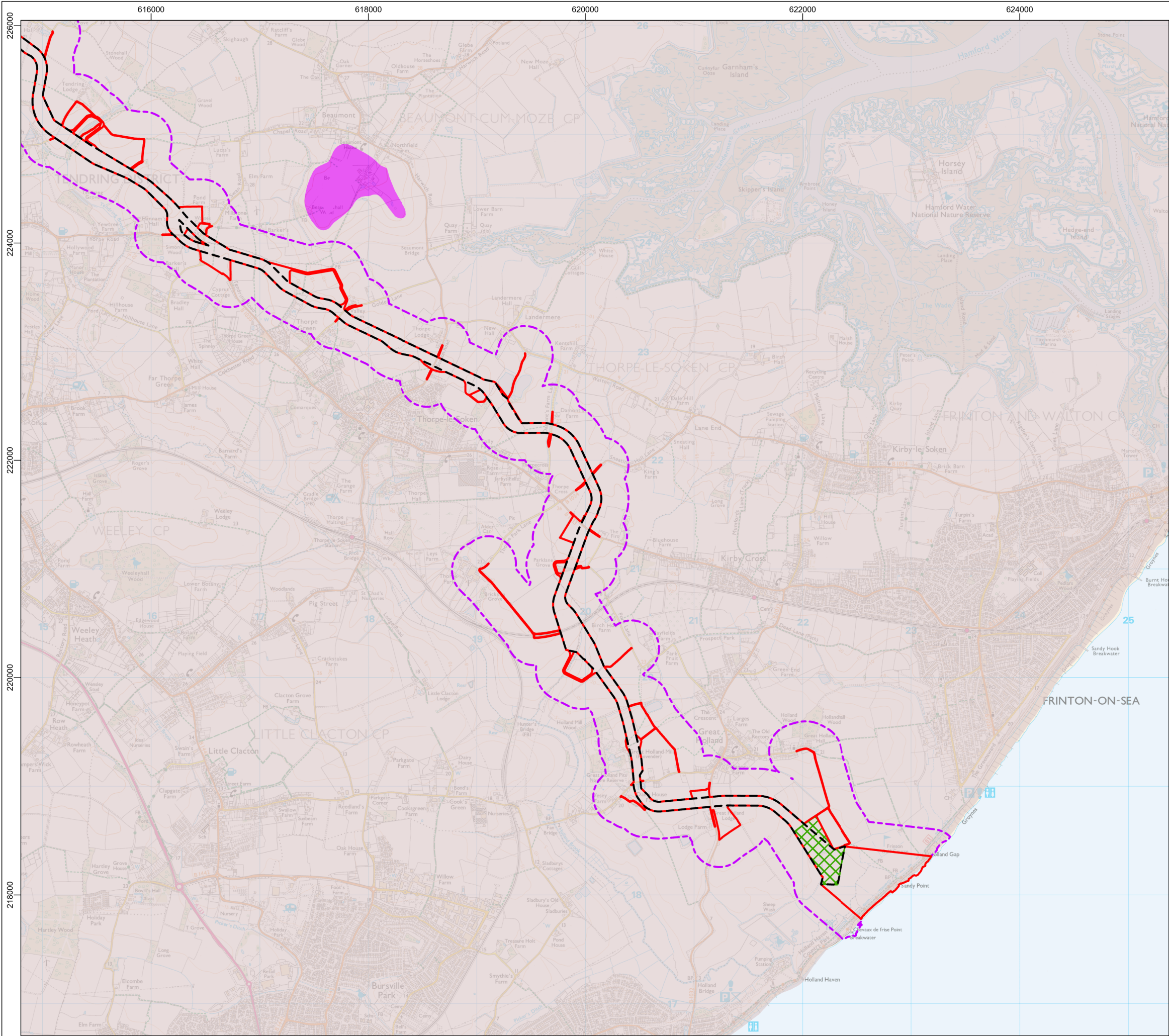
Scale	Plot Size	Datum	Projection
1:35,000	A3	OSGB36	BNG











**Legend**

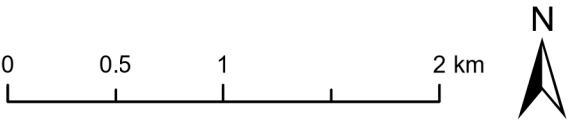
- Onshore Project Area
- Onshore Cable Route
- Landfall Compound

**Onshore Project Area Buffer**

- 250m

**Bedrock Geology**

- Thames Group - Clay, Silt and Sand
- Red Crag Formation - Sand



Data Source: © BGS, 2025. © HaskoningDHV UK Ltd. 2025.  
Contains Ordnance Survey data © Crown copyright and database rights 2025.

Drawing Title				
Bedrock Geology				

Rev	Date	Remarks	Drwn	Chkd
01	11/04/2025	First issue	FC	AW

Drawing Number			Figure Number	
PB9244-RHD-ZZ-ON-DR-GS-0664			4a	

Scale	Plot Size	Datum	Projection
1:35,000	A3	OSGB36	BNG







**NORTH FALLS**

*Offshore Wind Farm*



**RWE**

## **HARNESSING THE POWER OF NORTH SEA WIND**

*North Falls Offshore Wind Farm Limited*

*A joint venture company owned equally by SSE Renewables and RWE.*

*To contact please email [contact@northfallsoffshore.com](mailto:contact@northfallsoffshore.com)*

© 2024 All Rights Reserved

**North Falls Offshore Wind Farm Limited** Registered Address: Windmill Hill Business Park, Whitehill Way, Swindon, Wiltshire, SN5 6PB, United Kingdom  
Registered in England and Wales Company Number: 12435947